



innovative
pilot school



Gilles Street Primary School

**EARLY CLOSURE
THURSDAY 24th MARCH 2015**

2.15 pm

OSHC available from 2.30 pm. See
Mira in the OSHC Office.

Principal: Deb O'Neill

Assistant Principal: Gyllian Godfrey

Assistant Principal: Ginny Pryor

Ph: 8223 5184 Fax: 8223 7114

www.gillesstps.sa.edu.au

dl.0120.admin@schools.sa.edu.au

Coming up...

Mon Mar 21

AGM 5.30 - 7.00pm

EASTER

Mar 25-28

EARLY CLOSURE

Thu 24 March 2.15 pm

SCHOOL CLOSED

Good Friday

Easter Monday

Fri April 8

Assembly - Rooms 9 & 4

9.15 in the hall

Circle of Friends 10am

'Ozzie Lingo'

Fri April 15

End of Term 1

EARLY DISMISSAL

2.15pm

Term 2 begins

MONDAY MAY 2

16th March 2016

Issue 3

From the principal

Grounds Update

Work will recommence on the grounds development over the April school holidays. We need to remove a large amount of soil and refill it before continuing with the original landscaping designs. I know this has been frustrating and the children have had to compromise with the blocking off of some of the yard areas but

it was, unfortunately, unavoidable. Due to trucks moving across the yard we have delayed the process until the school holidays to minimise any risk. For those families that use Vacation Care you will need to enter the site from the back gate leading to south terrace or the western gate near the second car park. We envisage the soil removal

process will take 4 to 6 days over the break. We apologise for any inconvenience during this time.

AGM

This year we are combining the AGM with a family get together. A note of attendance for the BBQ was sent home this week so if you intend coming for the sausage sizzle and haven't received a note please see Rod in the front office. Nominations are also open for School Council positions. Being a member

of School Council is a rewarding experience and a great way to be involved in what is happening in the school and contributing to decisions being made for the school.

Deb O'Neill

Annual General Meeting



MONDAY 21st MARCH 2016

5.30 pm - 7.00 pm



5:30 - 6.15

FAMILY SAUSAGE SIZZLE

6.15 - 7.00

AGM

PRESENTATION OF ANNUAL REPORT

SCHOOL COUNCIL

NOMINATIONS/ELECTIONS

WEST ADELAIDE WOMEN'S SOCCER TEAMS

are looking for junior girls U11 to U13 to play club soccer in 2016. Trainings are Tuesday or Thursday nights at Park B27 Park Terrace, North Adelaide (opposite the old Clipsal site)

NO COST INVOLVED TO PLAYERS

Games are played Sunday Mornings. Come out and have a go and bring your friends. Beginners very welcome.

For more details and information contact Leon on 0409700354 email; lappelkamp@gmail.com or Nick on 0402965860 email; nmylo@yahoo.com.au

Inside this issue:

Pokemon and Yu-Gi-Oh Cards **2**

School Council
Nomination Form
Performance Troupe
Auditions - Festival of Music

SAPSASA Cricket **3**

Children are Stinky
Review
Urrbrae HS Open Day

April Vacation Care **4**

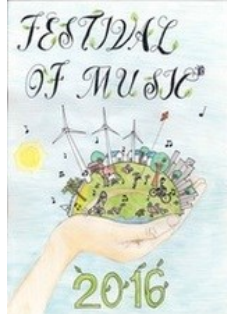


Pokemon & Yu-Gi-Oh



Pokemon and Yu-gi-Oh cards are causing some issues with students during recess and lunch. We would like to request that swap cards of this nature are left at home for the remainder of Term 1. Thank you for your cooperation.

Festival of Music 2016



Do you like to SING, DANCE or ACT?

Are you in Year 6/7? Do you want to try something new and challenging? Then the Festival of Music PERFORMANCE TROUPE is for you!

Audition bookings open on Monday, February 15, 2016! Audition bookings close on Wednesday, March 30, 2016.

Weekly Rehearsals are held at 3 locations: 4.15-5.45pm
NORTH - Parafield Gardens Primary (Tuesdays)
CENTRAL - Gilles Street Primary School (Wednesdays)
SOUTH - Darlington Primary (Thursdays)
There will also be a few Sunday workshops.

Each troupe will be involved in 4 performances accompanying the massed choirs at the Festival Theatre between the 12th and 23rd September, 2016.

Ask Mr. Aquilina more information or Check out our website: www.festivalofmusic.org.au or call the Festival Office on 8261 5438 for more information.

SCHOOL COUNCIL NEEDS YOU!!



SCHOOL COUNCIL NOMINATION FORM 2016/ 2017

I _____

wish to nominate as a member of Gilles Street Primary School Council for the 2016/2017 years (most council members serve for a 2 year period, however those wishing to only serve 1 year are welcome to nominate)

Or

I do not wish to nominate for school council but would like to assist at other times during the year

Name _____

Best Contact Phone Number _____

Email address _____

Child/ Childrens' names and class/es

SAPSASA Cricket



On the 29th of February our year 6/7s participated in SAPSASA cricket. We played against East Torrens Primary School. We all tried our best to win the game but unfortunately we lost by about 30 runs. Everyone played amazingly even though some of us had never played cricket before. We would like to thank the parents for taking us and for helping out. We would also like to thank Mr Tucker for organizing, umpiring and coaching as we couldn't have done it without him.

Children are Stinky - Performance Review



Children are Stinky is a hilarious Fringe show for all ages. Stinky Children is about Jason and Kylie, two adults who think kids are scaredy cats, lazy, uncoordinated, bad spellers and of course STINKY! Throughout the show the audience would come on to the stage and prove Jason and Kylie wrong with challenges, bravery tests and much more. It was a great show that filled the audience with laughter and fun. I would give them four and a half stars out of five.

By Saskia Room 11



Which High School?

URRBRAE AGRICULTURAL HIGH SCHOOL: *Providing unique opportunities for learners and future innovators.*
URRBRAE COULD BE THE SCHOOL FOR YOU

To find out what Urrbrae has to offer, come along to one of our Information Sessions on **Tuesday 22nd March, 2016** - Meeting at the Farm Shed. Two hour visits to the school will include:

Information about the Application Process, Farm Tour and School Tour

The Open Day Program runs from:

9.30-11.30am and will be repeated at 1.00-3.00pm and again at 6.00-8.00pm

Applications for Year 8 2017 will close at 5.00pm Wednesday 4th May 2016

Collect a brochure from your School Office for more details.

E-mail: dl.0798_admin@schools.sa.edu.au 505 Fullarton Road, Netherby SA 5062


Website: www.urrbraehs.sa.edu.au

Telephone: (08) 8372 6955 Facsimile: (08) 8372 6999

GILLES STREET PRIMARY SCHOOL VACATION CARE PROGRAM

April 2016

VENUE: RECREATION CENTRE
 Gilles Street Primary School
 91 Gilles Street, Adelaide SA 5000

 **8227 1746**

OPENING HOURS 8 AM – 6 PM






COST: \$51.00 per day per child
 (Excursions included)

For more information contact OSHC Director

CHILD CARE BENEFIT IS AVAILABLE TO MOST FAMILIES
BOOKINGS ARE ESSENTIAL



Children must be signed in and out of the Vacation Care program by the Parent /Caregivers each day that they are attending. Please make sure to look at the top of the "Sign out Book" for the day that your child/ren are actually attending (eg Mon, Tue, Wed, Thurs, Fri)

MONDAY 18-April - 16	TUESDAY 19-April - 16	WEDNESDAY 20-April - 16	THURSDAY 21-April - 16	FRIDAY 22-April - 16
<p>RECREATION CENTRE School Day</p>  <p>Art/Craft/Technology, Cooking, Computers, Sport Games, Electronic Games etc</p>	<p>WOODHOUSE ACTIVITY CENTRE Challenge Hill</p>  <p>Depart: Gilles Street 9.30am Return: Gilles Street 4.30pm Transport: Private Bus</p>	<p>MOVIE KUNG FU PANDA 3- 3D PG</p>  <p>Depart: Gilles Street 9.30am Return: Gilles Street 1.30pm Transport: Private Bus</p>	<p>INFLATABLE WORLD</p>  <p>Depart: Gilles Street 9.45am Return: Gilles Street 2.45pm Transport: Private Bus</p>	<p>RECREATION CENTRE School Day</p>  <p>Art/Craft/Technology, Cooking, Computers, Sport Games, Electronic Games etc</p>
MONDAY 25-April - 16	TUESDAY 26-April - 16	WEDNESDAY 27-April - 16	THURSDAY 28-April - 16	FRIDAY 29-April - 16
	<p>RECREATION CENTRE School Day</p>  <p>Art/Craft/Technology, Cooking, Computers, Sport Games, Electronic Games etc</p>	<p>SOUTH AUSTRALIAN GYMNASIIC CENTRE</p>  <p>Depart: Gilles Street 11.45am Return: Gilles Street 2.45pm Transport: Private Bus</p>	<p>BAKEHOUSE THEATRE GROUNDED</p>  <p>Depart: Gilles Street 10.00am Return: Gilles Street 1.00pm Transport: Walking</p>	<p>RECREATION CENTRE School Day</p>  <p>Art/Craft/Technology, Cooking, Computers, Sport Games, Electronic Games etc</p>



Don't forget Lunch, Morning & Afternoon tea every day!

(All food and drink must be provided by the parents)



PLEASE BE AT THE CENTRE BY 9.00AM ON ALL EXCURSION DAYS

(we cannot wait for children arriving late).

LAST DAY FOR BOOKING: Tuesday 5th April 2016 WITHOUT EXCEPTION
 (unless booked out prior to this date).

All bookings are final after the closing date and no cancellations will be accepted.
Bookings not paid for and confirmed by the closing date will be cancelled

THIS PROGRAM IS SUBJECT TO CHANGE AND WE ENCOURAGE ANY LEARNING AND FUN OPPORTUNITY

For more information on Vacation Care daily routines and expectations please go to
<http://www.gillesstps.sa.edu.au/OSHC>