



Logan City Council rates and water approximately \$65 per week and body corporate fees approximately \$38 per week.

31/15 Pine Avenue, Beenleigh, QLD 4207



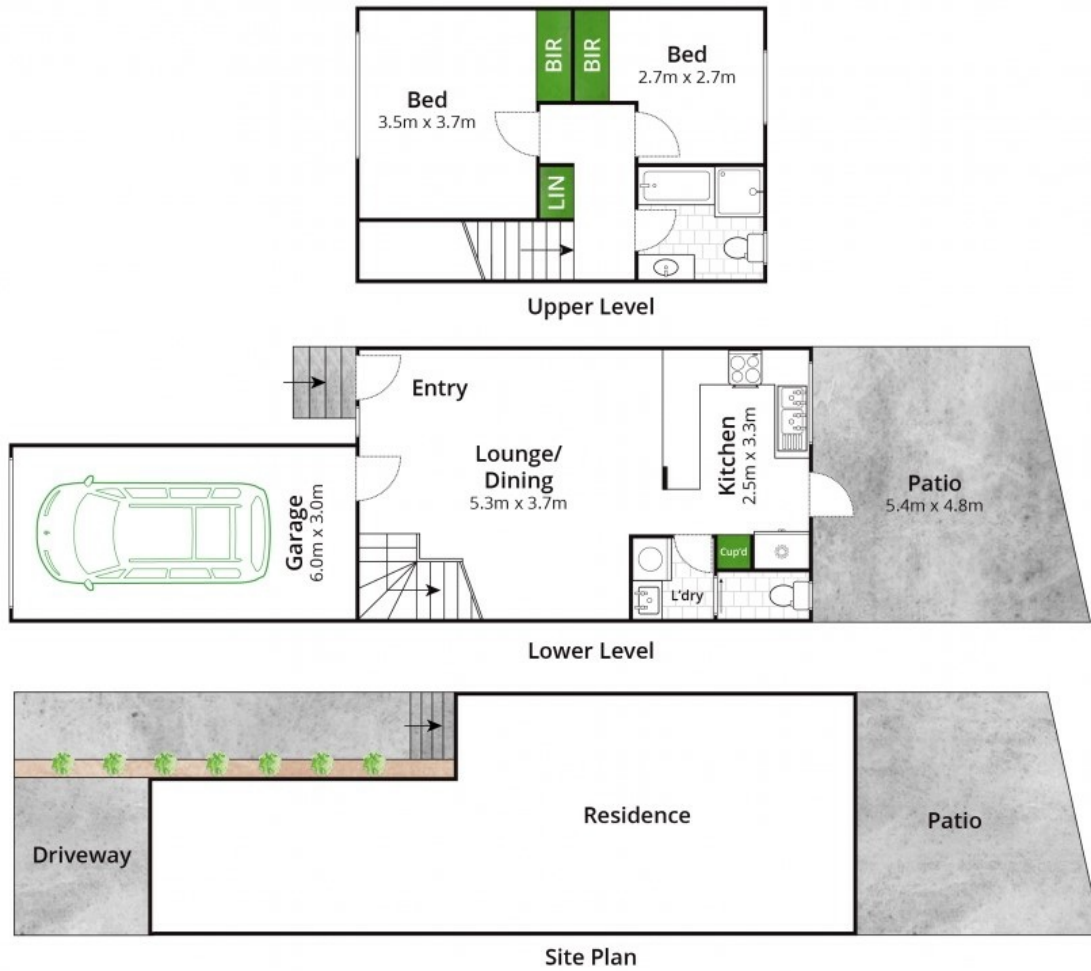
Laurell
Veivers

0412 205 807



Alison
Veivers-Russell

0419 786 511



Approx House Area 90m²
Approx Land Size 89m²

Whilst bwrn.com.au has made every attempt to ensure the accuracy of the floor plan contained here, measurements are approximate and no responsibility is taken for any error, omission, or mis-statement. This plan is for illustrative purposes only.

Situated in an quiet established complex. This centrally located townhouse provides easy access to the M1, local shops and transport, schools & an easy walk to the Beenleigh Bowls Club.

2  1  1 