



first
national
REAL ESTATE

Peoples' Choice RLA222770



4/96 Hampstead Road **Broadview**



firstnationalgawler.com.au

8523 4111



UPDATED UNIT MINUTES FROM THE CBD

Located only 6km from the CBD, this unit has been tastefully updated, designed with easy living in mind and is an ideal first home buy or investment.

Boasting a bright spacious lounge room that leads through to a separate dining area with high light filled lofty ceiling and is overlooked by an updated modern kitchen with stainless steel appliances, gas cook top and ample cupboard space.

There is reverse cycle air conditioning, master bedroom with fabulous large two way bathroom with bath and vanity also with high ceiling

and filled with natural light, separate laundry, surprisingly large front court yard and enclosed private rear courtyard.

Other features include a carport and off street visitor parking, ideally located close to all facilities and within walking distance to transport.

Robert Stell
0401 551 065

robert@firstnationalgawler.com.au



Rebecca Stell
0423 107 388

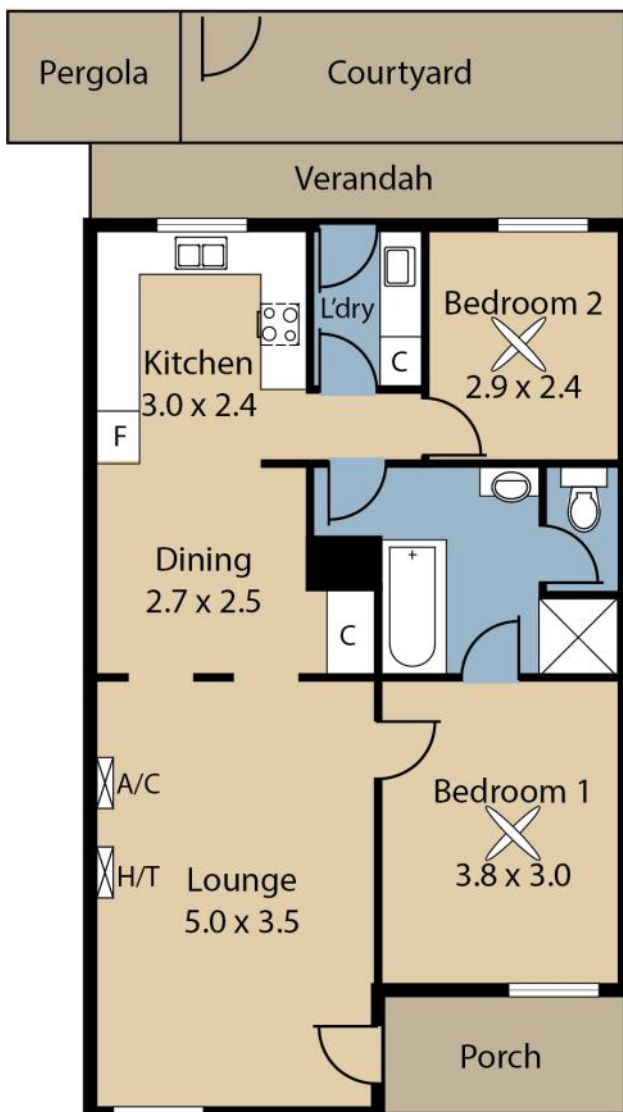
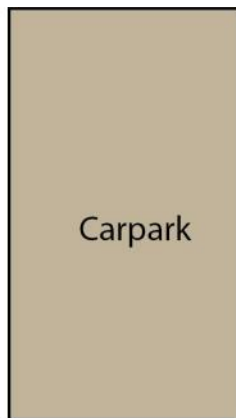
rebecca@firstnationalgawler.com.au



Price Guide: \$299,950

Floor Plan

Like us on Facebook to view all of our new properties first!
facebook.com/fnpeopleschoice



Living:	65.70 sqm
Porch:	4.50 sqm
Verandah:	6.50 sqm
Pergola:	3.36 sqm
Total:	80.06 sqm

This Drawing is for illustration purposes only. All measurements are approximate and details intended to be relied upon should be independently verified.

This brochure & floorplan are for illustration purposes only & all measurements are approximate. Any fixtures shown may not necessarily be included in the sale contract & it is essential that any queries are directed to the agent, & any information that is intended to be relied upon should be independently verified. Neither the agent, vendor or contracted illustrators take any responsibility for any omissions, wrongful inclusion or typographical error which may occur in this brochure as it is intended as an artistic impression only. While every endeavor has been made to verify the correct details in this publication, neither the agent or the vendors accept liability for any error or omission.



We Put You First

First National Real Estate Peoples' Choice - RLA222770

8523 4111

82 Adelaide Road GAWLER SOUTH