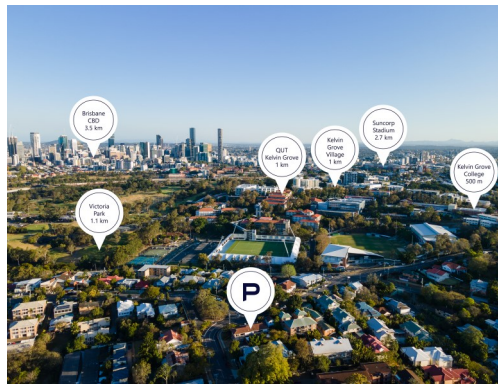


2 Clyde Road, Herston



Opportunity—As Good As It Gets!

HERSTON DEVELOPMENT SITE

- Corner block – driveways on both Scott Rd and Clyde Rd
 - Zoned Low-Medium Residential (2-3 storey mix)
 - Ideal for Unit or Townhouse development (STCA)
 - 3Km North of Brisbane CBD
 - Existing post war 5-bedroom dwelling (as of right to demolish)
 - Prime location within Herston's Royal Brisbane Hospital precinct
- Benefits from nearby proposed developments such as Herston Quarter

SIMON WHEELANS
0417 799 963
simon@placwest.com.au



Place.



AUCTION

30/10/21 12PM

UNLESS SOLD PRIOR

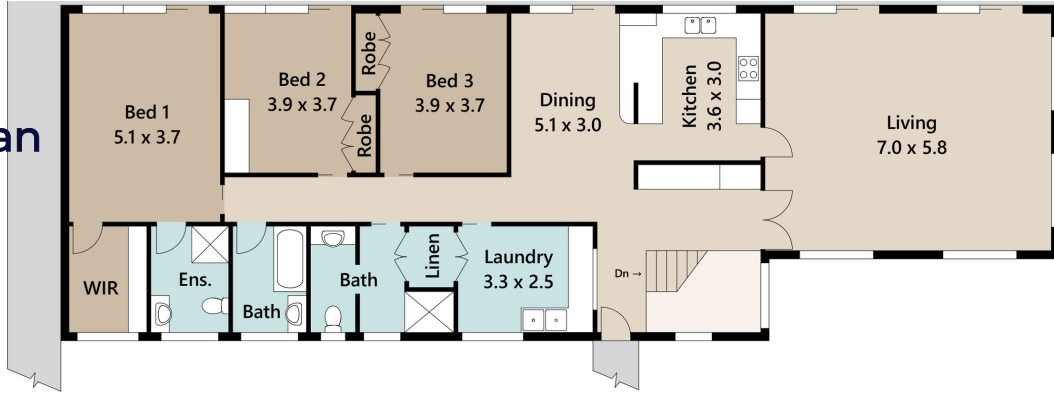


5 4 4 991

**Real Property:
L7/ RP 58272**

**Investor Rates:
\$1,218 / Qtr**

Floor Plan



UPPER FLOOR



LOWER FLOOR

