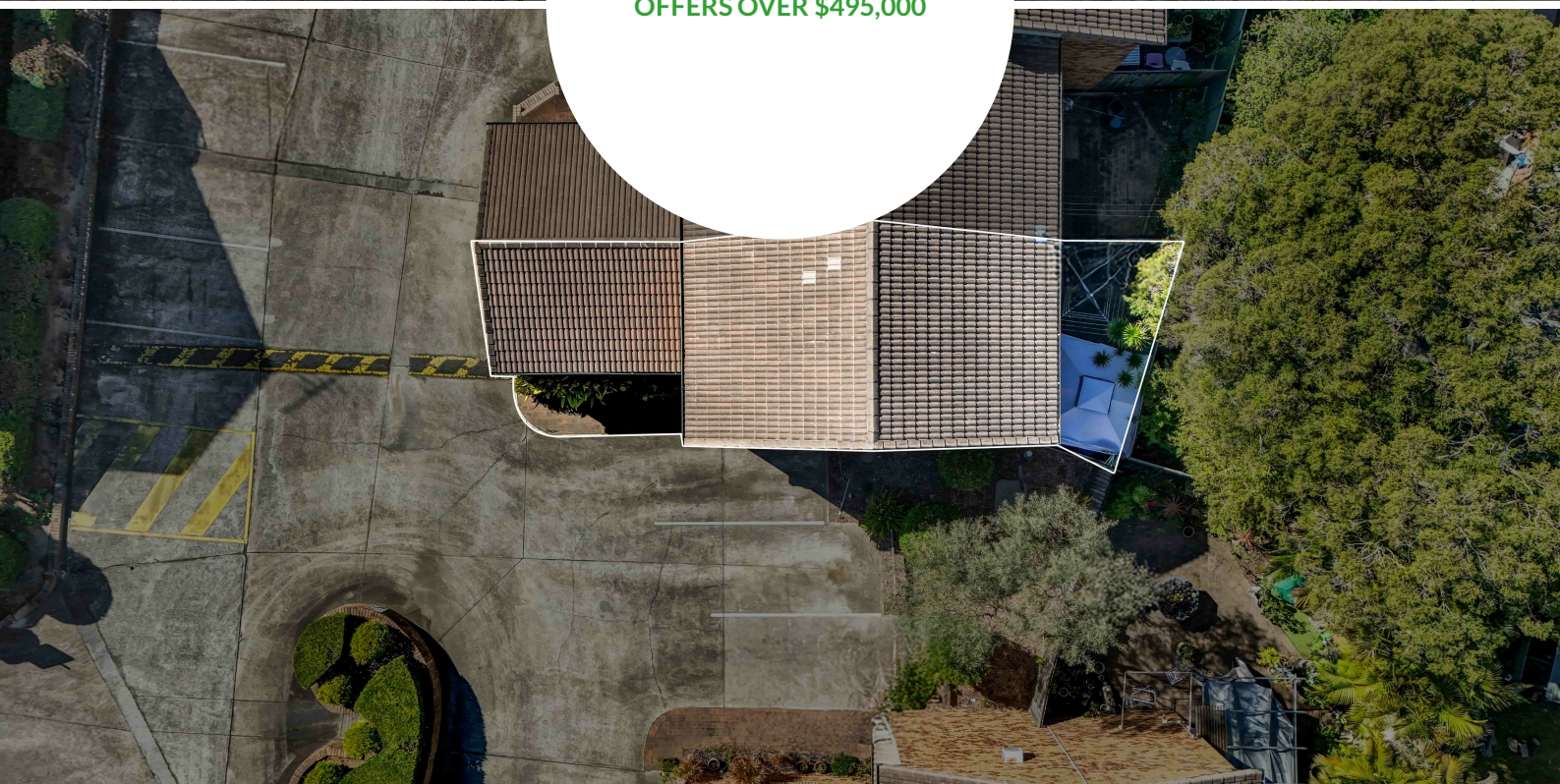




OFFERS OVER \$495,000



Features include:

- Two large bedrooms with built in wardrobes

5/15 Pine Avenue, Beenleigh, QLD 4207



Laurell  
Veivers

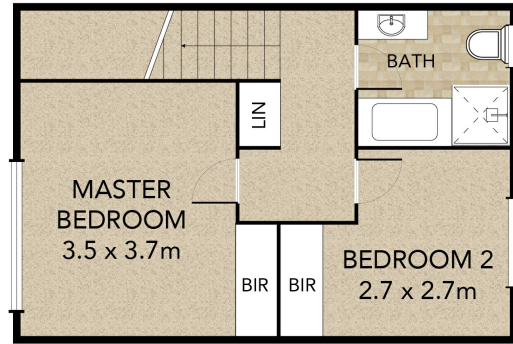
0412 205 807



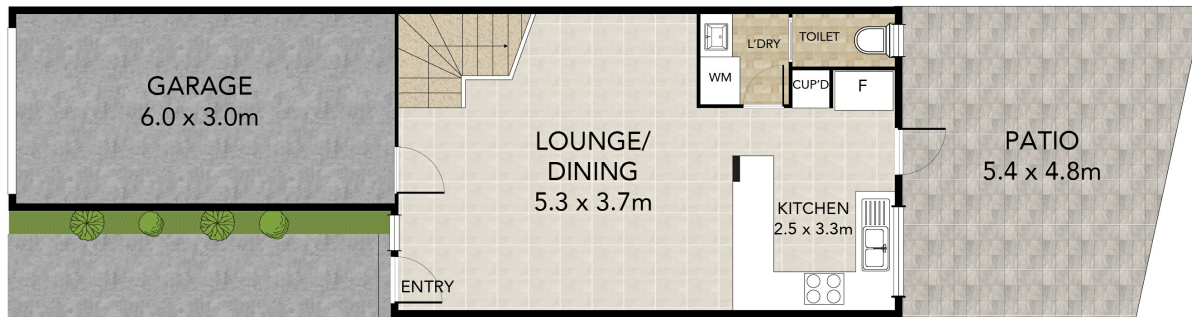
Alison  
Veivers-Russell

0419 786 511





UPPER LEVEL

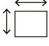





LOWER LEVEL



Ph: (07) 3462 0171

5/15 Pine Avenue  
Beenleigh

|  |                   |
|--|-------------------|
|   | 89 m <sup>2</sup> |
|   | 2 Bed             |
|   | 1 Bath            |
|  | 1 Car             |

|          |                    |
|----------|--------------------|
| Internal | 90 m <sup>2</sup>  |
| External | 20 m <sup>2</sup>  |
| Total    | 110 m <sup>2</sup> |



Whilst every attempt has been made to ensure the accuracy of the floor plan contained here, measurements of doors, windows, rooms and any other items are approximate and no responsibility is taken for any error, omission, or missed. This plan is for illustrative purposes only and should be used as such by any prospective purchaser.

5/15 Pine Avenue, Beenleigh, QLD 4207

2  1  1 

Body Corporate fees approximately \$68.50 per week.

Logan City Council rates and water fees \$1022 per quarter.

Currently tenanted at \$360 per week until October 2025 with a great tenant who would love to stay on. Rental appraisal range between \$475 - \$495 per week.