



first  
national  
REAL ESTATE

Peoples' Choice RLA222770



24 Aruma Crescent **Munno Para**



[firstnationalgawler.com.au](http://firstnationalgawler.com.au)

8523 4111





## *STARTING UP, SLOWING DOWN OR MAYBE INVESTING?*

Welcome to 24 Aruma Crescent, Munno Para. Perfectly situated within walking distance of schools, parks, and Munno Para Shopping City, this fantastically kept home is the one for you. With its flexible floor plan, the home comprises of three bedrooms, large living and dining areas, a neat kitchen area as well as a great backyard, entertainment area, shedding with concrete and lighting with drive through access. Also residing on a 660sqm allotment (approx.) the home is fully established with dual side access perfect for those with caravans or other items.

Featuring:

- Pull down shade blinds to the front windows
- Master bedroom with built-in robe
- Large main bathroom with large bath, shower, and character tiling with the convenience of a separate toilet
- Large dining and living area separated by sliding doors for the homely feel

- Large kitchen and meals area with plenty of cupboard and bench space with walk-in pantry
- Large rear entertaining area with decking
- Established garden areas
- Spacious undercover parking with drive through access to rear shedding
- The home is gas heated and is cooled by a refrigerated reverse cycle wall unit
- Water storage

First National Real Estate Peoples' Choice -  
RLA 222770

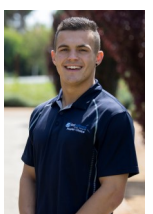
**Grant Fielke**  
**0427 300 049**

[grant@firstnationalgawler.com.au](mailto:grant@firstnationalgawler.com.au)



**Bailey Fielke**  
**0427 716 886**

[bailey@firstnationalgawler.com.au](mailto:bailey@firstnationalgawler.com.au)



**Price: \$219,000**

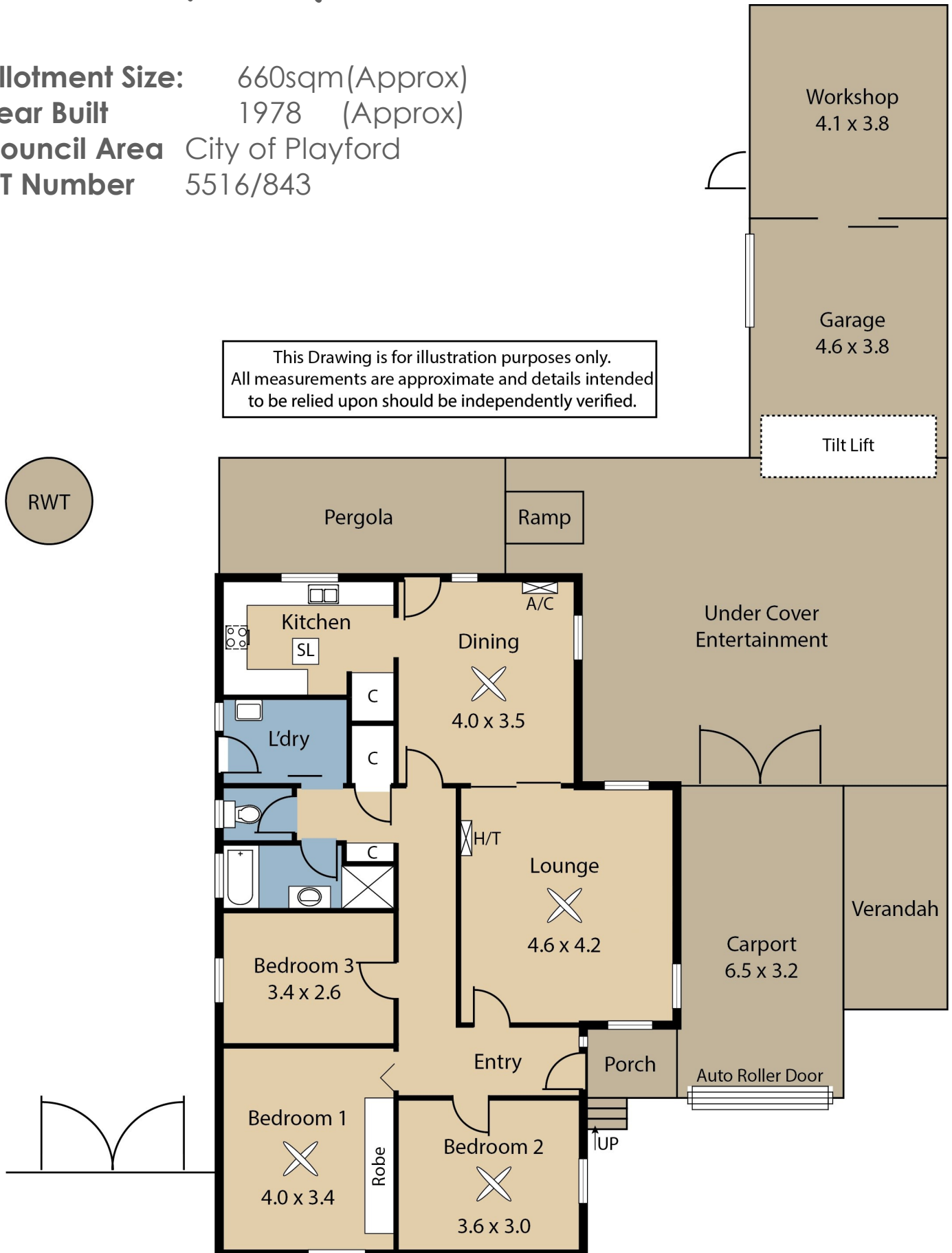
# Floor Plan

Like us on Facebook to view all of our  
new properties first!  
[facebook.com/fnpeopleschoice](https://facebook.com/fnpeopleschoice)



**Allotment Size:** 660sqm(Approx)  
**Year Built** 1978 (Approx)  
**Council Area** City of Playford  
**CT Number** 5516/843

This Drawing is for illustration purposes only.  
All measurements are approximate and details intended  
to be relied upon should be independently verified.



This brochure & floorplan are for illustration purposes only & all measurements are approximate. Any fixtures shown may not necessarily be included in the sale contract & it is essential that any queries are directed to the agent, & any information that is intended to be relied upon should be independently verified. Neither the agent, vendor or contracted illustrators take any responsibility for any omissions, wrongful inclusion or typographical error which may occur in this brochure as it is intended as an artistic impression only. While every endeavor has been made to verify the correct details in this publication, neither the agent or the vendors accept liability for any error or omission.

First National Real Estate Peoples' Choice - RLA222770





We Put You First

First National Real Estate Peoples' Choice - RLA222770

8523 4111

82 Adelaide Road GAWLER SOUTH