



**first
national**
REAL ESTATE

| Peoples' Choice RLA222770



8 Athens Terrace **Gawler East**



firstnationalgawler.com.au

8523 4111



ENDLESS POSSIBILITIES

Attention investors, tradies and families wanting the room to move! In the heart of Gawler East within walking distance to locals schools, walking trails and the Main Street, is this fantastic family home situated on a huge 950m2 approx. allotment.

Upon entering the home, you are greeted with the large formal lounge complete with a large window outlooking the front garden. The kitchen features breakfast bar, ample cupboard space dishwasher, wall oven and large pantry.

Comprising of four good size bedrooms, the master suite is complete with large window overlooking the manicured front garden, built-in robe and ensuite.

Additional features;

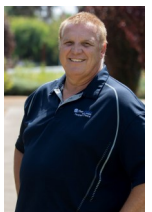
- Ducted air conditioning
- Combustion heater
- Main bathroom with separate toilet
- Two living areas

Outside improvements include full length verandah, 4m x 7.4m shed with concrete and power and various fruit trees under irrigation.

First National Real Estate Peoples' Choice - RLA 222770

Robert Stell
0401 551 065

robert@firstnationalgawler.com.au



Jade Stell
0438 828 815

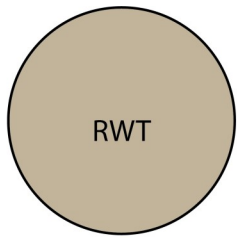
jade@firstnationalgawler.com.au



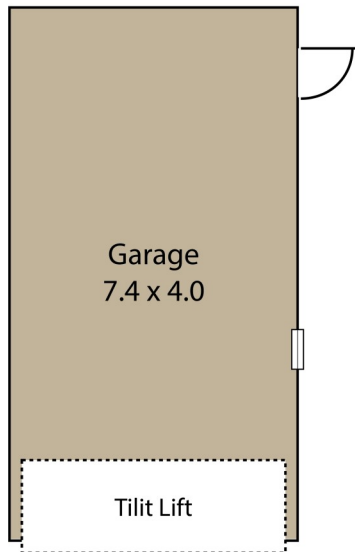
Price: Best & Final Offers by 30th March 2021

Floor Plan

Allotment Size: 950sqm (approx)
Year Built 1984
Council Area Town of Gawler
CT Number 5322/364

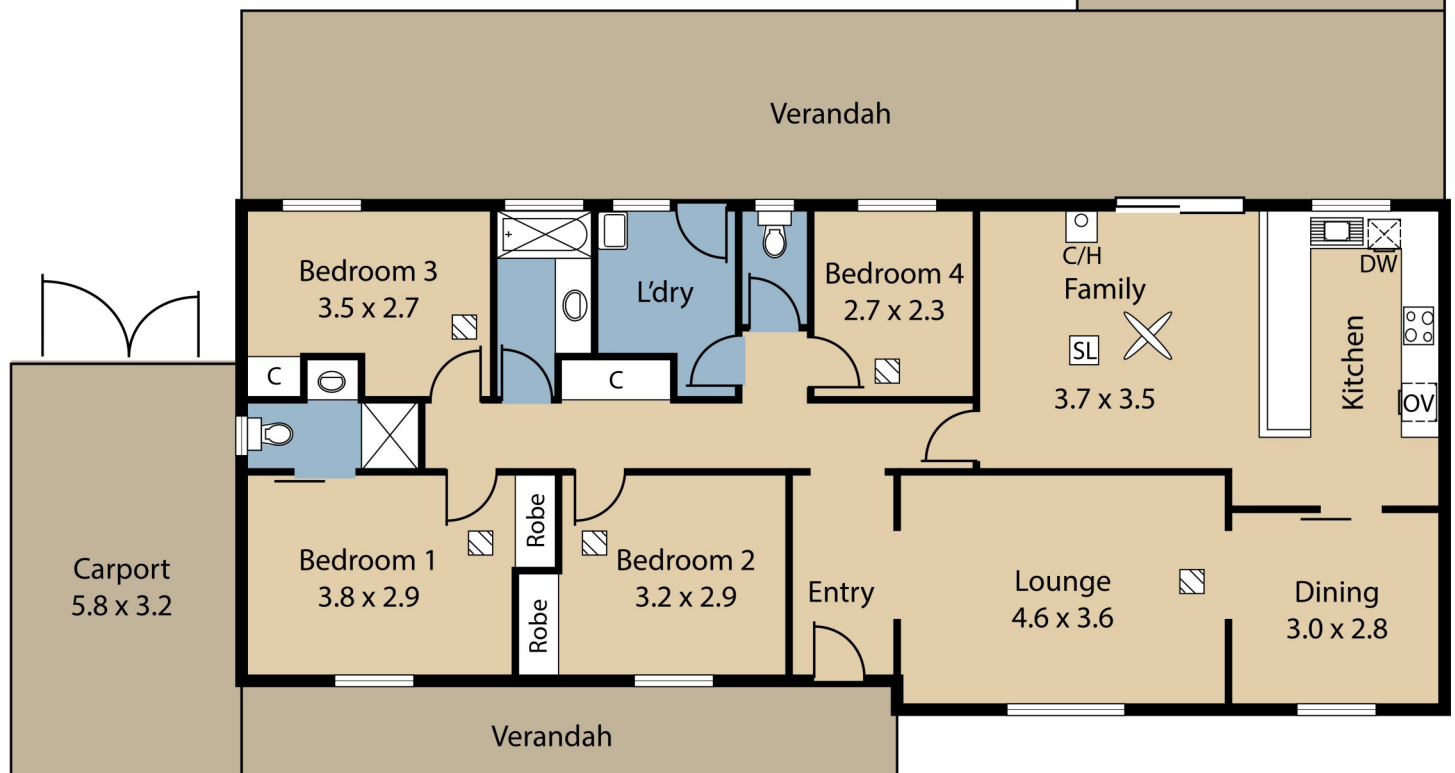
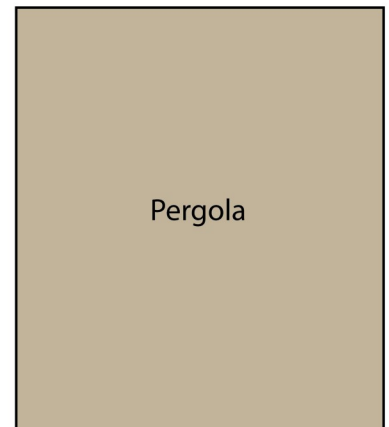


Like us on Facebook to view all of our
new properties first!
facebook.com/fnpeopleschoice



Living:	115.00 sqm
Verandah:	59.00 sqm
Carport:	19.00 sqm
Pergola:	31.00 sqm
Garage:	30.00 sqm
Total:	254.00 sqm

This Drawing is for illustration purposes only.
All measurements are approximate and details intended
to be relied upon should be independently verified.



This brochure & floorplan are for illustration purposes only & all measurements are approximate. Any fixtures shown may not necessarily be included in the sale contract & it is essential that any queries are directed to the agent, & any information that is intended to be relied upon should be independently verified. Neither the agent, vendor or contracted illustrators take any responsibility for any omissions, wrongful inclusion or typographical error which may occur in this brochure as it is intended as an artistic impression only. While every endeavor has been made to verify the correct details in this publication, neither the agent or the vendors accept liability for any error or omission.

First National Real Estate Peoples' Choice - RLA222770



We Put You First

First National Real Estate Peoples' Choice - RLA222770

8523 4111

82 Adelaide Road GAWLER SOUTH