



**first
national**
REAL ESTATE

| Peoples' Choice RLA222770



15 Berrett Road **Gawler East**



firstnationalgawler.com.au

8523 4111



WHEN SIZE COUNTS & PRICE MATTERS

Welcome to 15 Berrett Road, Gawler East. Perched on the high side of the road, this large Tudor style home has all the character anyone is looking for. Looking out onto the rolling hills of greater Gawler East, this large five bedroom, multiple living area home, set back on a large 735sqm (approx.) allotment is the perfect place to start your growing family and add your finishing touches.

Located within walking distance to schools, parks, The Main Street and public transport, this property is a mark above the rest when taking into consideration the size of the home, the allotment space and the remarkable price, now its up to you to finish it off. The home includes:

- Large downstairs living spaces, including front lounge, dining and living
- Contemporary updated kitchen with stainless steel appliances and plenty of cupboard and bench space
- Downstairs powder room
- Master bedroom with walk-in robe and spacious ensuite
- Three/four upstairs bedrooms with an abundance of space

- Updated family bathroom with bath, shower and double vanity
- A third floor lined attic acts as a great flexible space for your choosing
- Split system and evaporative air conditioning
- Outside the secured double length carport as well as the single front carport are ideal spots for vehicles
- The entertaining area is surrounded by established gardens
- Large shedding, perfect for garden storage
- Water Tank

First National Real Estate Peoples' Choice - RLA 222770

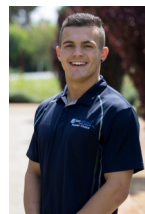
Grant Fielke
0427 300 049

grant@firstnationalgawler.com.au



Bailey Fielke
0427 716 886

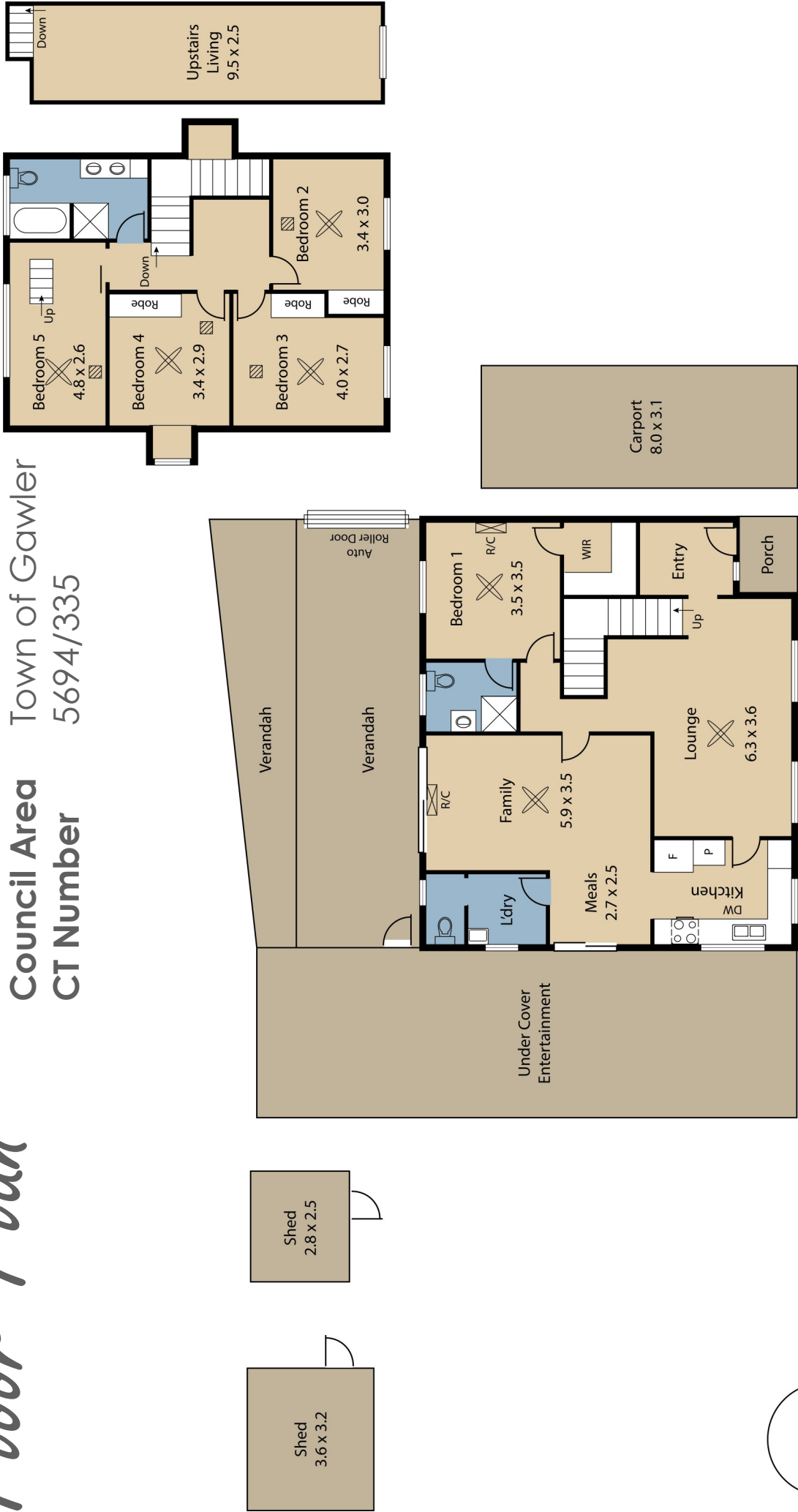
bailey@firstnationalgawler.com.au



Price: \$399,000

Floor Plan

Allotment Size: 735sqm(Approx)
Year Built 1986 (Approx)
Council Area Town of Gawler
CT Number 5694/335



Like us on Facebook to view all of our new properties first!
facebook.com/fnpeopleschoice

This brochure & floorplan are for illustration purposes only & all measurements are approximate. Any fixtures shown may not necessarily be included in the sale contract & it is essential that any queries are directed to the agent, & any information that is intended to be relied upon should be independently verified. Neither the agent, vendor or contracted illustrators take any responsibility for any omissions, wrongful inclusion or typographical error which may occur in this brochure as it is intended as an artistic impression only. While every endeavor has been made to verify the correct details in this publication, neither the agent or the vendors accept liability for any error or omission.



We Put You First

First National Real Estate Peoples' Choice - RLA222770

8523 4111

82 Adelaide Road GAWLER SOUTH