



**first
national**
REAL ESTATE

| Peoples' Choice RLA222770



31 Candlebark Court **Craigmore**



firstnationalgawler.com.au

8523 4111



NEWLY RENOVATED HIDDEN GEM

Nestled within the heart of Craigmores is this little beauty which has just been renovated to the core. A brand-new kitchen, new oven, new range hood, new floating floorboards and new carpet in all the bedrooms. The laundry has also had a full make over and matches the new kitchen benches with a new sink.

With lovely natural light flowing throughout this property, you can feel the great energy as soon as you enter. You will be amazed by the crisp and modern feel on the interior of the home. It really is cute as a button and is ready to move straight in. With new LED lights and new light fittings, and blinds, not to forget the new remote control ceiling fans and reversible wall unit air conditioner.

Outside offers a newly built veranda and newly cemented entertaining area with newly laid grass. This gorgeous home offers Craigmores High School, Playford Primary School and Blakeview Primary School all in a close proximity. This home is worth viewing, you won't be disappointed.

Brand new features include:

- Freshly painted throughout
- Kitchen, benches, sink, oven and range hood
- Floating floorboards
- Carpet in all three bedrooms
- Remote controlled ceiling fans
- Light fittings
- Blinds
- Laundry
- Pergola area
- Freshly laid grass
- New garden plants - easy to maintain garden
- Updated courtyard

First National Real Estate Peoples' Choice -
RLA222770

Sharryn Noonan
0418 143 098

sharryn@firstnationalgawler.com.au



Price Guide: \$369,000 - \$389,000

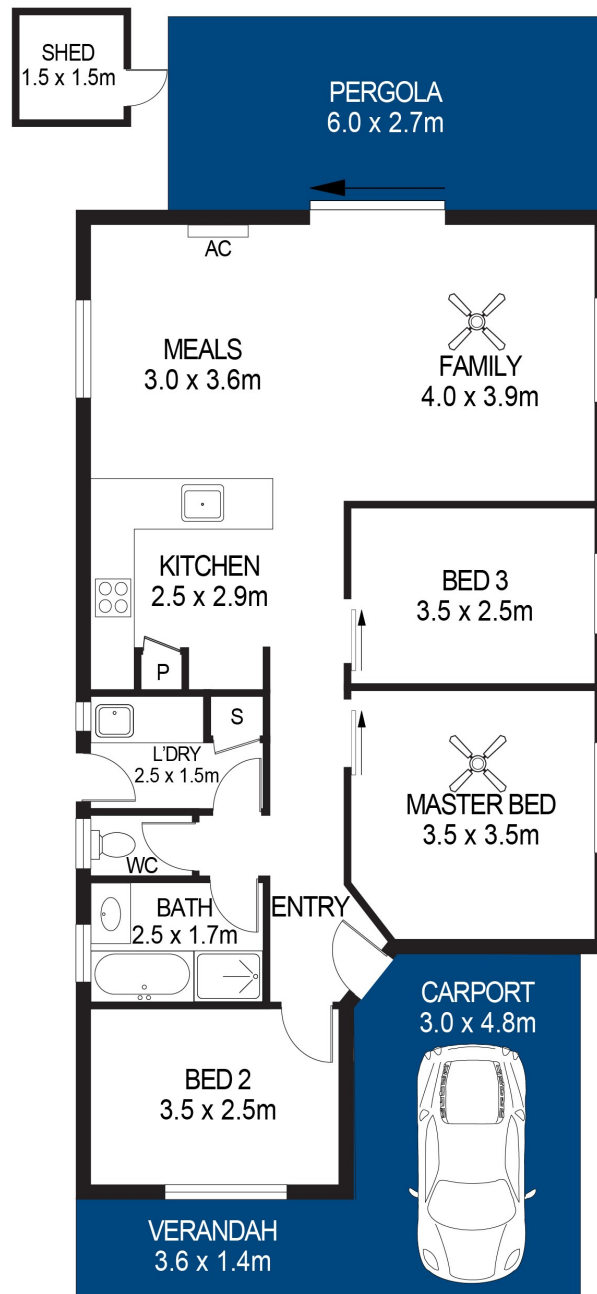
Floor Plan

Allotment Size
Year Built
Council Area
CT Number

290sqm (Approx)
1992 (Approx)
City of Playford
5065/208



Like us on Facebook to view all of our
new properties first!
facebook.com/fnpeopleschoice



31 CANDLEBARK COURT, CRAIGMORE

APPROXIMATE DIMENSIONS
LIVING: 87.0m²
VERANDAH/SHED: 7.3m²
PERGOLA/CARPORT: 30.6m²
TOTAL: 124.9m²

DISCLAIMER

PLANS SHOWN ARE FOR MARKETING PURPOSES ONLY, ALL DIMENSIONS ARE APPROXIMATE AND NOT TO SCALE. THEY ARE SUBJECT TO ERRORS AND INACCURACIES AND NO LIABILITY WILL BE ACCEPTED. INTERESTED PARTIES SHOULD MAKE THEIR OWN ENQUIRIES.



IMAGES AND FLOORPLAN BY:
IN-HOUSE
IMAGING
inhouseimaging.com.au

This brochure & floorplan are for illustration purposes only & all measurements are approximate. Any fixtures shown may not necessarily be included in the sale contract & it is essential that any queries are directed to the agent, & any information that is intended to be relied upon should be independently verified. Neither the agent, vendor or contracted illustrators take any responsibility for any omissions, wrongful inclusion or typographical error which may occur in this brochure as it is intended as an artistic impression only. While every endeavor has been made to verify the correct details in this publication, neither the agent or the vendors accept liability for any error or omission.

First National Real Estate Peoples' Choice - RLA222770

