



**first
national**
REAL ESTATE

| Peoples' Choice RLA222770



11 Dartmouth Street **Davoren Park**



firstnationalgawler.com.au

8523 4111



NEST OR INVEST

First National Gawler are pleased to present 11 Dartmouth Street, Davoren Park. Built in 2002 this modern home set on a generous 595sqm approximately makes this home incredibly appealing for those looking for their first home, downsizing or looking at a great investment opportunity. With a little TLC and a few improvements, you could really turn this house into a home.

House offers-

- Roller shutters to front windows
- Single garage with roller door
- Concrete driveway
- Low maintenance front garden
- Vinyl flooring throughout
- Formal carpeted lounge
- Bedroom one and two both with built-in robes
- Bedroom three with ceiling fan
- Generous size bathroom offering neutral tones
- Laundry has a large built-in cupboard perfect for storage
- Open plan family and dining
- Split system
- Timber look kitchen with electric oven

Outside offers –

- Paved, flat roof pergola perfect for entertaining
- Rainwater tank

- Large grassed backyard
- Fruit tree
- Garden bed
- Side access through gates easily accessible for another car, trailer or perhaps a caravan.

So, whether you are looking for your forever home or a reason to start your investment portfolio this home ticks so many boxes. It is in a great location with schools, public transport, and shopping precincts so easily accessible.

First National Real Estate Peoples' Choice - RLA 222770

Robert Stell
0401 551 065

robert@firstnationalgawler.com.au



Melissa Slack
0491 303 446

melissa@firstnationalgawler.com.au

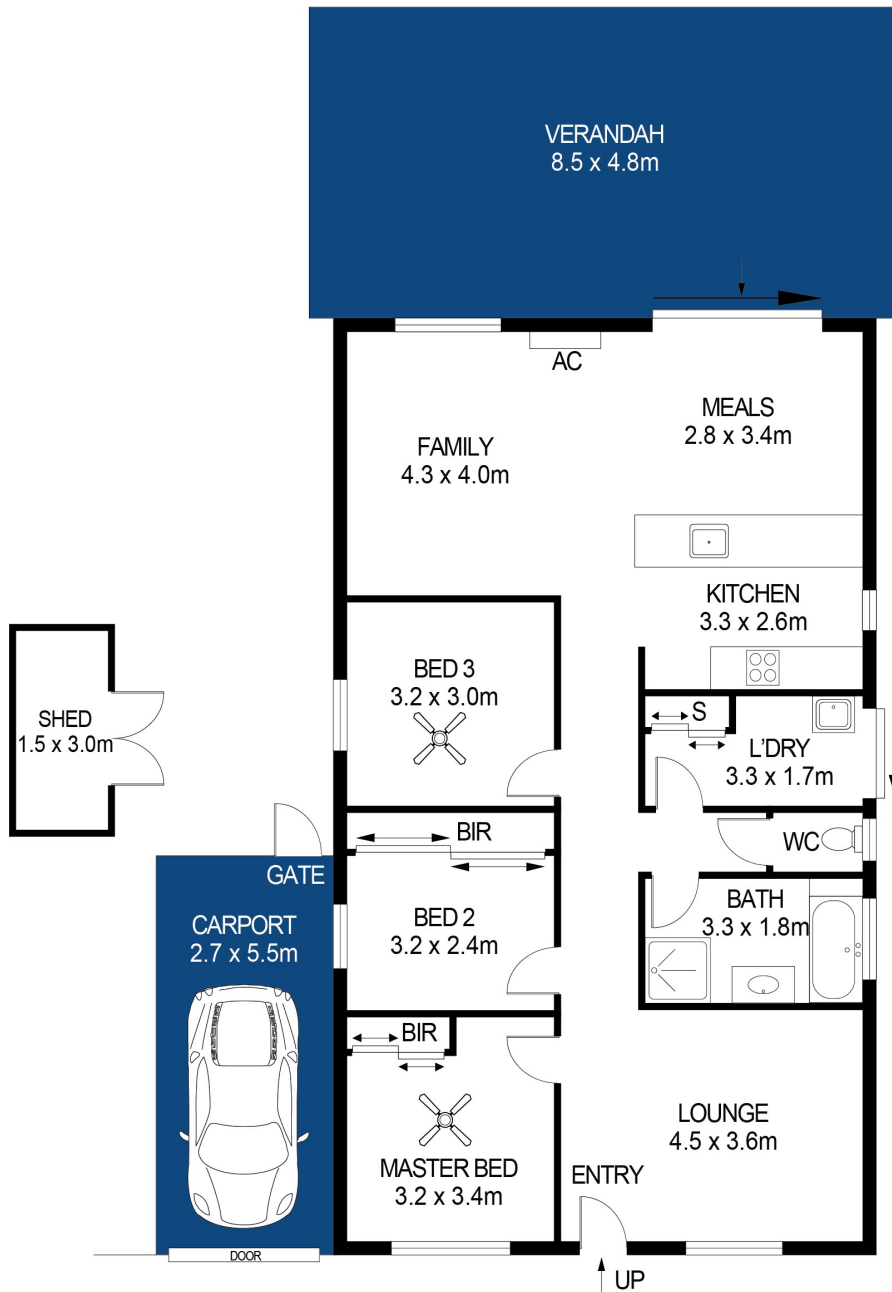
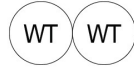


Floor Plan

Allotment Size: 595sqm (Approx)
Year Built: 2002 (Approx)
Council Area: City of Playford
CT Number: 5525/170



Like us on Facebook to view all of our
 new properties first!
facebook.com/fnpeopleschoice



APPROXIMATE DIMENSIONS	
LIVING:	111.8m ²
CARPORT:	14.9m ²
SHED:	4.5m ²
VERANDAH:	40.8m ²
TOTAL:	172.0m ²

11 DARTMOUTH STREET, DAVOREN PARK

DISCLAIMER

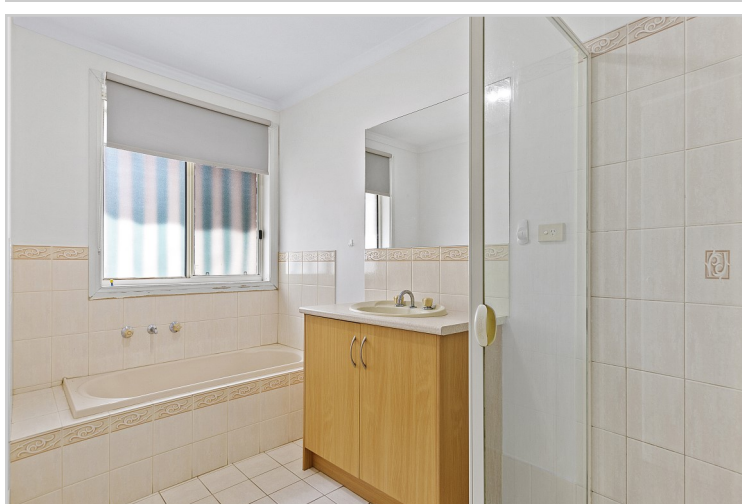
PLANS SHOWN ARE FOR MARKETING PURPOSES ONLY. ALL DIMENSIONS ARE APPROXIMATE AND NOT TO SCALE. THEY ARE SUBJECT TO ERRORS AND INACCURACIES AND NO LIABILITY WILL BE ACCEPTED. INTERESTED PARTIES SHOULD MAKE THEIR OWN ENQUIRIES.



IMAGES AND FLOORPLAN BY:
IN - HOUSE
 IMAGING
inhouseimaging.com.au

This brochure & floorplan are for illustration purposes only & all measurements are approximate. Any fixtures shown may not necessarily be included in the sale contract & it is essential that any queries are directed to the agent, & any information that is intended to be relied upon should be independently verified. Neither the agent, vendor or contracted illustrators take any responsibility for any omissions, wrongful inclusion or typographical error which may occur in this brochure as it is intended as an artistic impression only. While every endeavor has been made to verify the correct details in this publication, neither the agent or the vendors accept liability for any error or omission.

First National Real Estate Peoples' Choice - RLA222770



We Put You First

First National Real Estate Peoples' Choice - RLA222770

8523 4111

82 Adelaide Road GAWLER SOUTH