



Zodiac LED Underwater Niche Lights

INSTALLATION INSTRUCTIONS FOR LUMIPOWER LIGHT ENGINE



14226



A division of

FLUIDRA




For full warranty terms and conditions and to register your warranty, simply visit www.zodiac.com.au/warranty and complete your details. Or scan the QR code and be taken directly to the registration page

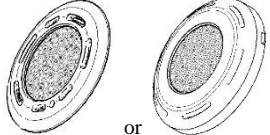
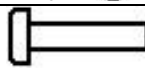

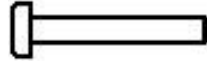
Record your Equipment details here for quick reference:

Model No.: _____

Serial No.: _____

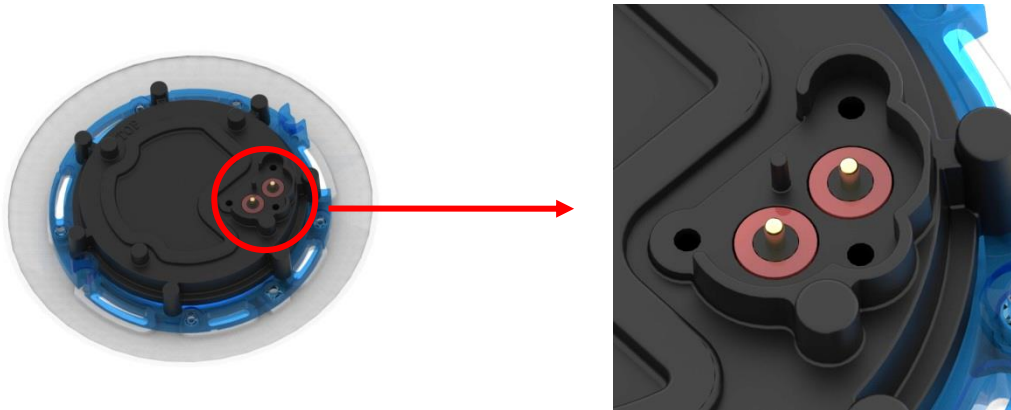
Installation Of Light Engine

Kit Contents

Quantity	Item	
1	Lumipower Light (concrete, fiberglass, or flush mount)	
1	20350 Light Plug Mount Kit	3x  2x 
1 (Concrete mounting only)	13529 Mounting Screws Kit	3x 

Installation Instructions

1. Remove the red protective cap from the cable plug. Discard the three screws and the O-rings.
2. Remove the light engine from its packaging. Insert the two O-rings from kit 20350 into the grooves on the back of the light and double-check that they are positioned correctly, as shown below.



3. Align the plug with the socket on the light and use the three screws from kit 20350 to attach the plug securely to the light. Tighten these screws firmly by hand only; do not use a power tool.

NOTE: Plug and socket can be engaged only in one position as depicted. Before applying any force to the plug and socket, check both parts are aligned as shown.

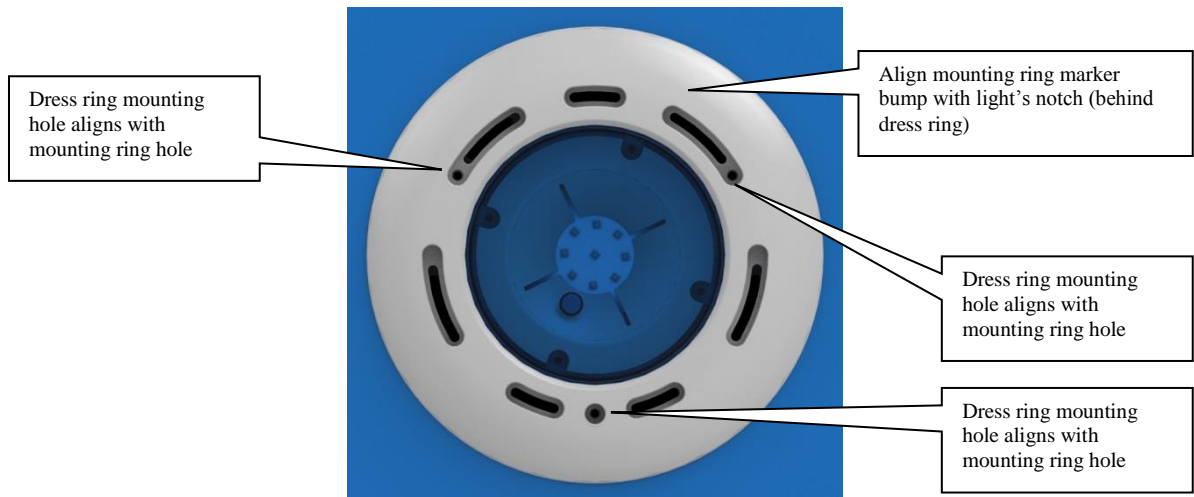


4. Double check that the cable gland inside the niche is tightened. Coil the remaining cable into the niche, leaving enough spare cable in the niche to be able to bring the light (with cable attached) above the waterline. This allows for easy servicing at a later date.
5. Locate the "TOP" marking on the rear of the light.



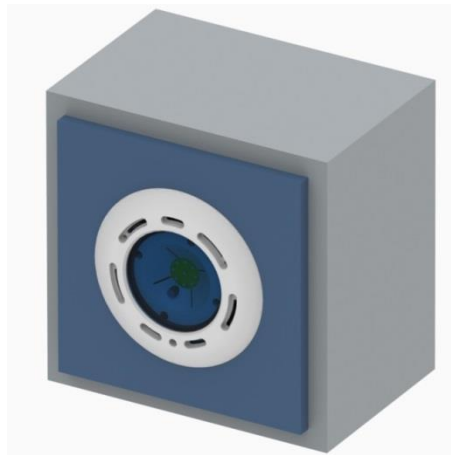
6. For concrete pools:

- a. Insert the light into the niche, keeping the "TOP" marking at the top and aligning the screw holes of the light to those in the mounting ring.



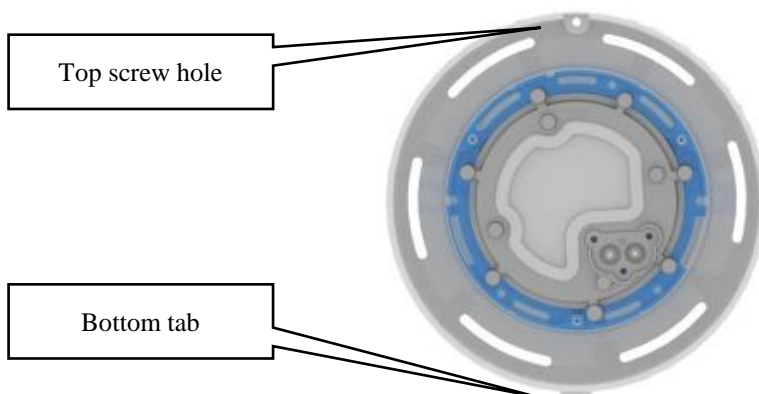
- b. Using the three screws in kit 13529, attach the light and dress ring to the niche using a manual screw driver. Do not over-tighten; using power tools may cause damage. Before filling the pool check the light is functioning by switching it on for a few seconds.

Note: Do not look directly at the light whilst it is operating.



7. For flush-mount installations:

- a. Remove the pre-installed retaining screw from the top of the mounting plate. Retain this screw for later use.
- b. On the face plate, identify and position the screw hole at the top and the protruding tab at the bottom.



Insert the protruding tab into the slot at the bottom of the mounting plate by holding the light at an angle to the wall, then seat the light into the mounting plate. Reinsert the original retaining screw to hold the light in position. Do not over-tighten; using power tools may cause damage. Before filling the pool check the light is functioning by switching it on for a few seconds.

Note: Do not look directly at the light whilst it is operating.



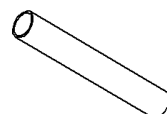


Instructions for Retrofitting To Existing Pools

The Lumipower Light has been designed to be compatible with other light vendors' mounting methods. Installing your new Lumipower light will require two main steps: mounting the light into the existing hardware, and joining the Lumipower power cable to the existing power cable.

Kit Contents

20349 – Cable Light 2.5m

Quantity	Item	
1	20349 Cable – Light 2.5m	
2	Solder splice	
1	Heatshrink (glued)	

Installation Instructions

For concrete and fibreglass niche installations:

1. Remove the old light from the concrete or fibreglass niche.
2. Test fit the new Lumipower light by following the steps for “Installation Of Light Engine” above. If your new Lumipower light fits, proceed with the installation. If the light doesn't fit, please contact Zodiac for further advice.

Note: DO NOT SUBMERGE the Lumipower light into pool water unless it has the cable fitted.

3. Follow the steps below to join the Lumipower power cable to the existing power cable.
4. Perform final installation of the Lumipower light.

For flush-mount installations:

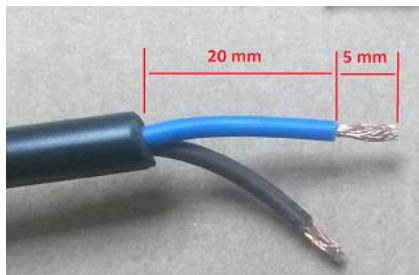
1. Remove the old light and flush mounting plate from the pool wall. As Lumipower lights will fit directly onto some existing mounting plates, trial fit the Lumipower light to the mounting plate. If the light fits, then the old mounting plates can be reused if they are in good condition. If the existing mounting plate can't be used, then it can be used as a pattern to drill mounting and cable holes in the Lumipower mounting plate.

Note: DO NOT SUBMERGE the Lumipower light into pool water unless it has the cable fitted.

2. Follow the standard “Flush-mount Installation” instructions, which will guide you through installing your new Lumipower light.
3. Follow the steps below to join the Lumipower power cable to the existing power cable.
4. Perform final installation of the Lumipower light.

To join the Lumipower power cable to the existing wiring:

1. If necessary, cut off the old connector from the existing power cable. Trim the supplied Lumipower power cable so that, once joined, the new combined power cable has sufficient length to be able to reach above the surface of the water. This allows easier installation and servicing. Excess cable can be removed if desired.
2. Trim the ends of both of the cables to be joined as shown. Note that if either cable has solder on the cables this section should be cut off so that the bare wires are exposed.



3. Ensure that the cables to be joined are clean and dry in the area around the proposed joint. If the cable isn't clean, it may be possible to trim the cable until a clean area is reached. Otherwise, the cable can be lightly rubbed with sandpaper to remove concrete residues etc.
4. Slide the heatshrink tube onto the longest cable and well away from the joint. This tube has to be kept clear of the solder splices when they are being heated.



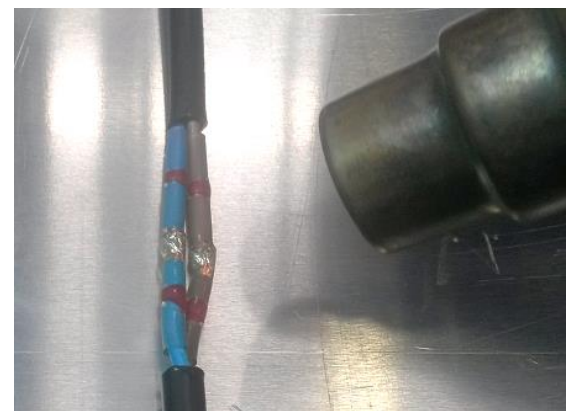
5. Fit one of the solder splices to each of the two wires of the old cable.



6. Slide the wires from the new cable into the solder splices and position each splice so that the silver coloured solder ball is positioned over where the 2 wires join.



7. Using a heat gun on Medium to High heat, gently heat the centre of the solder splices until the solder ball melts and runs into the wire. Take care to only heat around the solder ball as excess heat can damage the cable. Check that the red seals next to the solder balls have also melted.



8. Slide the heat-shrink tube over the joint, ensuring that the heat-shrink tube covers each end of the joint evenly and start to heat the tubing from the centre outwards. Continue to heat the centre until the tube starts to decrease in size.



9. Continue heating the heat-shrink tube towards the ends but be CAREFUL not to heat the cables directly as they can be DAMAGED.



10. Once the heat-shrink tube has shrunk completely the glue from inside of it should be visible on the ends.



11. Leave the completed joint to COOL for 5 minutes to ensure that the glue seal isn't damaged. Once cooled, momentarily power the light to confirm that the connection is sound.



Zodiac is a registered trademark of Fluidra Group Australia Pty Ltd
ABN 87 002 641 965

CUSTOMER SERVICE CENTRE

Fluidra Group Australia
219 Woodpark Rd, Smithfield,
NSW. 2164 Australia

